

ISSN 2509-4327 (print)
ISSN 2510-4780 (online)

Inter
GING



Deutscher Wissenschaftsherold German Science Herald

№ 2/2017

Die Zeitschrift „Deutscher Wissenschaftsherold“ ist eine Veröffentlichung mit dem Ziel ein breites Spektrum der Wissenschaft allgemeinverständlich darzustellen. Die Redaktionsleitung versteht sich als Vermittler zwischen Wissenschaftlern und Lesern. Durch die populärwissenschaftliche Bearbeitung wird es möglich unseren Lesern neue wissenschaftliche Leistungen am besten und vollständigsten zu vermitteln. Es werden Untersuchungen, Analysen, Vorlesungen, kurze Berichte und aktuelle Fragen der modernen Wissenschaft veröffentlicht.

Impressum

Deutscher Wissenschaftsherold – German Science Herald

Wissenschaftliche Zeitschrift

Herausgeber:

InterGING

Sonnenbrink 20

31789 Hameln, Germany

Inhaber: Marina Kisiliuk

Tel.: + 49 51519191533

Fax.: + 49 5151 919 2560

Email: info@dwherold.de

Internet: www.dwherold.de

Chefredakteur/Editor-in-chief:

Marina Kisiliuk

Korrektur:

O. Champela

Gestaltung:

N. Gavrilets

Auflage: № 2/2017 (Juli) – 25

Redaktionsschluss Juli, 2017

Erscheint vierteljährlich

Editorial office: InterGING

Sonnenbrink 20

31789 Hameln, Germany

Tel.: + 49 51519191533

Fax.: + 49 5151 919 2560

Email: info@dwherold.de

Deutscher Wissenschaftsherold - German Science

Herald is an international, German/English language,

peer-reviewed, quarterly published journal.

№ 2 2017

Passed in press in Juli 2017

Druck: WIRMachenDRUCK GmbH

Mühlbachstr. 7

71522 Backnang

Deutschland

Der Abdruck, auch auszugsweise, ist nur mit ausdrücklicher Genehmigung der InterGING gestattet. Die Meinung der Redaktion oder des Herausgebers kann mit der Meinung der Autoren nicht übereinstimmen. Verantwortung für die Inhalte übernehmen die Autoren des jeweiligen Artikels.

INDEXING: Google Scholar, WorldCat, InfoBase Index, Journal Index, Citefactor, International Scientific Indexing, JIFACTOR, Scientific Indexing Services, International Institute of Organized Research.



JIFACTOR



CiteFactor
Academic Scientific Journals



Scientific Indexing Services



INTERNATIONAL
Scientific Indexing



MIAR

<http://miar.ub.edu/issn/2509-4327>

© InterGING

© Deutscher Wissenschaftsherold – German Science Herald

REDAKTIONSKOLLEGIUM / INTERNATIONAL EDITORIAL BOARD:

Jurga Bernatoniene, Dr., Prof.
Physics Lithuania
jurgabernatoniene@yahoo.com

Arvidas Galdikas, Dr. habil., professor
Physics Lithuania,
arvidas.galdikas@ktu.lt

Kristina Ramanauskienė, Ph.dr., Prof.
Pharmacy, Lithuania
kristinaraman@gmail.com

Khpaliuk Alexander, Dr. med. habil., Prof.
Pharmakologie, Belarus
clinicfarm@bsmu.by

Arnold M. Gegechkori, Dr., full Prof.
Biology, Georgia
arngegechkori@yahoo.com

Omari Mukbaniani, Prof., DSc.
Chemistry, Georgia
omar.mukbaniani@tsu.ge

Teimuraz Lezhava, Prof.
Genetics, Georgia
teimuraz.lezhava@tsu.ge

Shota A. Samsoniya, Prof.
Chemistry, Georgia
shota.samsonia@tsu.ge

Mdzinarashvili Tamaz, DSc., Prof.
Biophysics, Georgia
tamaz.mdzinarashvili@tsu.ge

Aliaksandr V.Prokharau, MD, PhD, MSc Prof.
Oncology, Belarus
aprokharau@gmail.com

Pyrochkin V., MD, PhD, MSc Prof.
Theraphy, Belarus
wlad_cor@mail.ru

Golubev A.P., BD, Prof.
Ecology, Belarus
algiv@rambler.ru

Makarevich A., MD, PhD, Prof.
Theraphy, Belarus
makae@bsmu.by

Kanunnincova N., BD, Prof.
Physiology, Belarus
n.kanunnikova@grsu.by

Giedrius Vanagas, Prof.
Internal Medicine, Lithuania
Giedrius.Vanagas@lsmuni.lt

Armuntas Baginskas, Prof.
Neurofiziologija, Lithuania
Armuntas.Baginskas@lsmuni.lt

Ricardas Radisauskas, MD., Ph.D., Prof.
Cardiology, Lithuania
Ricardas.Radisauskas@lsmuni.lt

Meyramov Gabit, Prof.
Cytology and Histology, Kazakhstan
meyramow@mail.ru

Aisha Mohammed Abd al-salam Shahlol
Ph.D. in Medical Bacteriology, Libya
Ais.shahlol@sebhau.edu.ly

Edmundas Kadusevicius, MD, PharmD, PhD, Prof.
Pharmacology, Lithuania
Edmundas.Kadusevicius@lsmuni.lt

Ivo Grabchev, Prof., PhD.
Chemistry, Bulgaria
i.grabchev@chem.uni-sofia.bg
grabchev@mail.bg

Mariyana Ivanova Lyubenova, Prof., PhD.
Ecology, Bulgaria
ryann@abv.bg
ryana_1@yahoo.com

Tsvetanka Tsankova Marinova, MD, PhD, DMedSci,
Biologv. Bulgaria
tmarinova@yahoo.com

Evgueni D. Ananiev, Prof PhD,
Biology. Bulgaria
evgueni_ananiev@yahoo.com

Plamen G. Mitov, Prof., PhD.
Biology, Bulgaria
mitovplamen@gmail.com

Atanas Dimov Arnaudov, Ph.D.
Physiology, Bulgaria
arny87@yahoo.co.uk

Iliana Georgieva Velcheva, PhD,
Ecology, Bulgaria
anivel@abv.bg

Osman Demirhan, Prof.
Biology, Turkey
osdemir@cu.edu.tr

Jharna Ray, M. Sc., PhD, Prof.
Neurogenetics, India
Indijharnaray@gmail.com

Marián Halás doc. RNDr, Ph.D.
Human geography, Czech
marian.halas@upol.cz

Ayfer Pazarbasi Prof.Dr.
Biology, Turkey
payfer@cu.edu.tr

Tusharkanti Ghosh Prof.
Physiology, India
tusharkantighosh53@yahoo.in

Khudaverdi Gambarov Gambarov, Prof.
Microbiology, Azerbaijan
khuda1949@mail.ru

Rovshan Ibrahimkhalil Khalilov, Prof.
Biophysics, Azerbaijan
hrovshan@hotmail.com

Svitlana Antonyuk, Dr.phil.
Stony Brook University, USA
Linguistics

Samuel M.Johnson, Prof.Dr.phil.
Theology, Wells, Maine, USA
djtjohnson@earthlink.net

Satanovsky Leon MD/PhD.
Perio-odontologie, Israel
satleonid@gmail.com

Lists of references are given according to the Vancouver style

**Dudenko V.G.,
Vdovychenko V.Yu.,
Kurinnoy V.V.**

*Kharkiv National Medical University, Department of Operative Surgery and Topographic Anatomy, Kharkiv, Ukraine,
vgd2008@ukr.net*

SPATIAL TOPOGRAPHY OF THE DIAPHRAGM IN THE SAGITTAL PLANE IN WOMEN

Abstract. *Individual spatial topography of the patient diaphragm is of certain importance for diagnostic and therapeutic manipulations. The study to determine individual characteristics of the spatial topography of the human diaphragm in sagittal plane based on SCT-data considering sex, age and somatotype has been conducted. The material for the study was the data after examination of 75 patients with different diseases of the abdominal and thoracic cavities. Measuring of the diaphragm attachment angles in the sagittal plane was made on the vertebral, paravertebral, scapular and posterior axillary lines on both sides (front and back values). Statistical analysis of the measurements revealed little correlation between the age and angle of diaphragm attachment in female. Other parameters were not correlated with the studied values (sex and type of the body structure).*

Key words. *Individual spatial topography, attachment angle of the diaphragm.*

Introduction. Individual spatial topography of the diaphragm is of a great importance for understanding the structural organization of this organ in every particular clinical case [1]. To conduct diagnostic and especially therapeutic manipulations the awareness of individual peculiarities of every patients is compulsory. This knowledge enables to avoid damage of the internal organs of the abdomen and thorax in case of their puncture (catheterization), to determine localization of a pathological process more precisely, and to choose the method of further surgery or conservative treatment [2, 3].

Objective of our study was to find individual peculiarities of the spatial topography of the human diaphragm in two vertical planes – sagittal and frontal on the bases of spiral computed tomography (SCT) examination considering sex, age and somatic type [4, 5].

On the basis of the results of the obtained findings availability (or absence) of relations between individual peculiarities of spatial topography and sex, age and somatic type has been planned to find. The data obtained were used to develop 3D program of an individual modeling of the human diaphragm [6, 7].

Materials and methods. The data of 75 patients examined during the last 2 years concerning various diseases of the abdominal and

thoracic organs were used in the investigation. There was no any diaphragmatic pathology found. The analysis and processing of the images obtained were conducted on the working station “HP-Z820” with application of the specialized program “Vitrea 2”.

There were 61 men and 14 women involved in the study. Their age ranged from 26 to 82. According to the body or somatic type the following proportions were found: male hypersthenic persons – 35%, normosthenic – 60%, asthenic – 15%; among women this proportion was the following: 30%, 50% and 20% respectively. The body constitutional type was determined according to Pinje index. Due to limited possibilities we will not present all the data obtained, but will show only minimal and maximal values. The article presents the findings obtained in the investigation of the attachment angles of the diaphragm to the sagittal pane in women. The data obtained will be presented in the following succession: the values of the angles of the diaphragm attachment to the vertebral line (vl), paravertebral line (pvl), scapular line (sl) and posterior axillary line (pal) in the left, and the same examinations (except vertebral line) in the right.

Figure presents the screenshot of the measurement of the human diaphragm

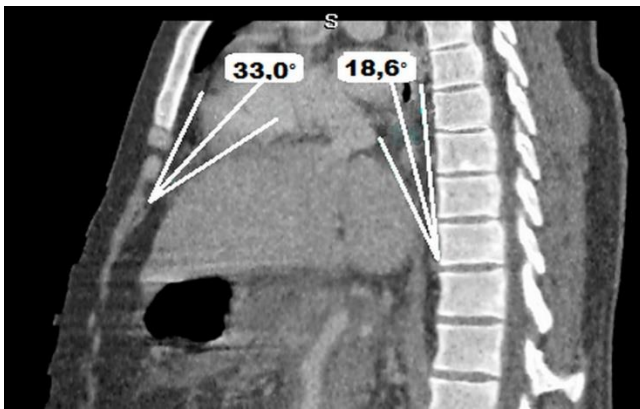


Figure. The angles of human diaphragm attachment along the vertebral line in the frontal plane.

attachment angles along the vertebral line in the frontal plane. The figure demonstrates that these investigations will present two values: the first value – the angle of the diaphragm attachment along the anterior surface (as – sternal line), and the second value – the angle of the diaphragm attachment along the posterior surface (ps – the vertebral line proper).

Results and discussion. The data characterizing minimal and maximal values of the diaphragm attachment in women are presented in Table 1. The biggest number of values of the diaphragm

Table 1

Minimal and maximal values of the diaphragm attachment in women in the sagittal plane

		asthenic		Normosthenic		hypersthenic	
		min	max	min	max	min	max
vl	as	26,4°	58,6°	33,6°	95,4°	29,6°	60,0°
	ps	5,2°	40,2°	10,0°	43,4°	9,2°	48,4°
Left pvl	as	35,7°	91,0°	27,7°	89,2°	15,0°	102,8°
	ps	20,5°	75,0°	23,3°	76,5°	17,1°	80,6°
Left sl	as	27,2°	83,5°	38,4°	106,0°	41,5°	101,8°
	ps	27,1°	75,6°	23,3°	66,1°	24,0°	69,1°
Left pal	as	27,2°	92,6°	38,4°	106,0°	41,5°	101,8°
	ps	24,0°	75,5°	16,1°	54,1°	23,1°	51,7°
Right pvl	as	32,6°	74,4°	16,1°	73,5°	42,4°	85,3°
	ps	32,9°	80,5°	24,1°	76,1°	17,5°	72,5°
Right sl	as	28,2°	66,0°	21,7°	65,2°	36,3°	75,7°
	ps	24,1°	69,7°	21,5°	70,4°	29,7°	74,5°
Right pal	as	22,1°	46,0°	16,6°	68,5°	19,5°	76,6°
	ps	20,4°	63,0°	21,5°	81,7°	24,8°	75,5°

attachment along the vertebral line (anterior surface) is found within the interval from 70° to 80°. There were 4 such cases (28,6%). 3 cases (21,4%) were found within the range from 50° to 60°. Therefore, 50,0% of cases were within the range from 50 to 60 and 70 – 80°.

The most frequent values of the diaphragm attachment along the vertebral line (posterior surface) in women were found within the range from 10° to 20° – 6 cases (42,9%) and within the range from 20° to 30° – 4 cases (28,6%). Therefore, within the range from 10° to 30° there were 71,5% of all cases found.

The angle of attachment along the posterior surface was not determined in all the cases. It is connected with individual peculiarities of the aorta location concerning the vertebral column.

The angles of the diaphragm attachment along

the left paravertebral line in the sagittal plane in women were measured anteriorly and posteriorly; the order of the data presented is: the first measurement – the angle of attachment along the anterior surface (parasternal line), the second measurement – along the posterior surface (paravertebral line).

The cases within the range from 60° to 70° (4 cases) were found most frequently (28,6%). 3 cases (21,4%) were found within the range from 70° to 90°. Therefore, 50,0% of cases were within the range from 60 to 90°. The rest of the measurements were not conducted due to individual peculiarities of the internal organs location.

The second value in women along the paravertebral line in the left looked like the following: the values within the range from 40° to

50° were found more frequently. There were 5 of them (35,7%). The rest of values were evenly distributed in all the intervals. It should be noted that all the values were not able to be obtained in the patients examined. It is associated with individual peculiarities of the aorta location concerning the vertebral column.

The first value of the angles of the diaphragm attachment along the scapular line in the left in women was the following: most frequent values were within the interval from 50° to 60°. There were 5 such cases (35,7%). Within the interval from 60° to 80° there were 42,8% of all the cases. Therefore, within the range from 50° to 80° there were 78,5% of all the cases.

The second value of the angles of the diaphragm attachment in women was the following: most frequent values were within the interval from 30° to 40° – 5 cases (35,7%). 3 more cases were found within the range from 40° to 50° (21,4%). Therefore, 57,1% of cases were found within the intervals from 30° to 50°.

The next line examined in the sagittal plane in the left is the posterior axillary line.

The first value (along the anterior surface) of the diaphragm attachment in women was the following: most frequent values were found within the interval from 30° to 40° – 6 cases (42,8%) and from 50° to 60° – 4 cases (28,8%). 2 more cases (14,3%) were within the range from 40° to 50°. Therefore, within the interval from 30° to 60° there were 85,9% of all cases.

The second value (posterior surface) of the diaphragm attachment along the posterior axillary line in women was the following: most frequent values were found within the interval from 30° to 40°. There were 6 such cases (42,8%). There were 5 values (35,7%) within the interval from 40° to 50°. Therefore, within the interval from 30° to 50° there were 11 cases (78,6%).

Then the angles of the diaphragm attachment in the sagittal plane in the right side of the thorax along the similar lines were studied.

In women the first value of the angles of the diaphragm attachment was the following: most frequent values were found within the interval from 50° to 60°. There were 5 values (35,7%). 3 more cases were found within the range from 40° to 50° (21,4%). Therefore, 57,1% of cases were within the range from 40° to 60°.

The second value (posterior surface) of the diaphragm attachment along the paravertebral line in the left in women was the following: most frequent values were found within the interval from 40° to 50°. There were 5 values (35,7%). 2 more cases (14,3%) were within the range from 30° to 40°. Therefore, 50% of all the cases were within these ranges.

The right scapular line was studied in the sagittal plane. In women the first value of the angles of the diaphragm attachment was the following: most frequent values were found within the interval from 50° to 60°. There were 4 such cases (28,5%). Within the ranges from 30° to 40° and from 60° to 70° there were 3 cases (21,4%). Therefore, within the interval from 30° to 70° there were 71,4% of all the cases.

The second value (posterior surface) of the diaphragm attachment along the scapular line in the right in women was the following: most frequent values were found within the interval from 30° to 40°. There were 6 such cases (42,8%). Within the interval from 40° to 50° there were 4 cases (28,5%). Therefore, within the interval from 30° to 50° there were 71,4% cases.

The measurement along the posterior axillary line in the right of the diaphragm attachment angle in the sagittal plane was the last.

In women the first value of the diaphragm attachment angles was the following: most frequent values were found within the interval from 30° to 40°. There were 5 of them (35,7%). 4 more cases were found within the range from 20° to 30° (28,5%). Therefore, within the range from 20° to 40° there were 64,3% of all cases.

The second value (posterior surface) of the diaphragm attachment along the posterior axillary line in the right in women was the following: most frequent values were found within the interval from 30° to 40° and from 40° to 50°. There were 5 and 4 such cases respectively, constituting 35,7% and 28,5% accordingly. Therefore, within the interval from 30° to 50° there were 64,3% of all the cases.

Conclusions. 1. Individual spatial topography of the diaphragm is very variable and practically does not depend on the sex, age and body constitution type. 2. In certain cases (16%) in individuals of both sexes the height of the location of the left cupola of diaphragm is longer in the left than in

the right, which is explained by a high position of the spleen. 3. The data obtained should be considered while interpreting X-ray images and performing thoracocentesis in the left.

Prospects of further studies. To advance knowledge concerning the spatial topography of the human diaphragm further studies in different planes and projections should be conducted considering the sex, age and somatic type.

References.

1. Adams DC, Rohlf FJ, Slice DE. *Geometric Morphometrics: Ten Years of Progress Following the 'Revolution'*. *Ital J Zool.* 2004(71):5-16.

2. Ahmad I, Kaukab N, Ikram M, Hussain A. *Anatomical Variations of Diaphragmatic Crura. Journal of Rawalpindi Medical College.* 2011;15(2):120-2.

3. Hsu-Chong Yeh, Halton KP, Gray CE. *Anatomic Variations and Abnormalities in the Diaphragm Seen with USI. Radiographics.* 1990;10(6):1019-30.

4. Dudenko VG, Kurinnoy VV. *Individualnaya*

topografiya «slabyih» mest diafragmyi cheloveka. In: Morfologiya – meditsinskoy Nauke i praktike. Sb. trudov nauch.-prakt. konf. 2014; Minsk. Respublika Belarus. 2014. p. 103-105.

5. Dudenko VG, Avrunin OG, Tyimkovich MYu, Kurinnoy VV. *Postroenie personalizirovannoy anatomicheskoy modeli diafragmyi cheloveka. Zh. Eksperimentalna i klinichna meditsina.* 2014;63(2):68-70.

6. Dudenko VG, Kurinnoy VV. *Metodika obrabotki meditsinskih zobrazheniy dlya predoperatsionnogo modelirovaniya diafragmyi cheloveka. Zh. Eksperimentalna i klinichna meditsina.* 2014;64(3):148-51.

7. Dudenko VG, Vdovichenko VYu, Kurennoy VV. *Individualnaya prostranstvennaya topografiya diafragmyi cheloveka po materialam spiralnoy kompyuternoy tomografii. In: Zb. tez nauk. roblt mlzhnar. nauk.-prakt. konf. Nove u meditsinl suchasnogo svltu, 2014 nov 28-29; Lvlv. Lvlv; 2014. p. 64-66.*

CONTENT:

Yasnikovska S.M. Peculiarities of pregnancy progress in women with corrected isthmic-cervical incompetence	3
Shkolnikov V.S., Zalevskiy L.L., Zalevska I.V. Structural organization of the cerebellum of 17-18 week human fetuses during intrauterine development	5
Khmara T.V., Okrim I.I., Biriuk I.G., Komar T.V., Khmara A.B. The specialization degree of wood-destroying basidial fungi on trees in samur-davachi lowland forests of azerbaijan	10
Tkachenko P.V. Clinical-morphological prognostic characteristics of prostate cancer	14
Sasina O.S. Psychohygienic aspects of training of disabled adolescents with pathology of the vision (literature review)	19
Banul B.Yu. Development of paramesonephric ducts and their derivatives at the end of embryonic period of human ontogenesis	23
Niankovskiy S.L., Gorodylovska M.I. Heterogeneity of esophagitis in schoolchildren	26
Yevtushenko I.Y, Padalitsa M.A, Goryainova G.V. Age features of cervical arch and height of human renal calyces in mature and elderly ages	32
Vepruk Y., Rohovyy Y., Tovkach Y., Rykhlo I. Characteristic of aluminum salts influence on indexes of ion regulative renal function in mature and immature rats against the background of the pineal gland hyperfunction	35
Zakharchuk O.I., Kryvchanska M.I. Chronoregulating and rhythm-stabilizing role of melatonin in seasonal structure of circadian rhythms of non-specific immunity indices with aging	38
Kachko G.O., Omelchenko E.M., Pedan L.R., Polka O.O. Characteristics of congenital pathology with inherited and multifactorial nature in children of Kyiv region	41
Kosilova S.Y. Metabolic disorders in women depending on menopause duration	44
Kotelban A.V., Godovanets O.I., Burdeniuk I.P. Peculiarities of administration of antiseptic drugs in children suffering from chronic catarrhal gingivitis under conditions of diabetes mellitus	47
Reshetilova N.B., Navarchuk N.M., Popeliuk O.-M.V., Glubochenko O.V., Kulish N.M. Topographic peculiarities of the anterior cerebral vesicle on the 4th week of the embryonic period	51
Fik V.B., Paltov Y.V., Lohash M.V., Kryvko Y.Y. Peculiarities of morphological manifestation of the periodontal tissue in experimental animals against the ground of a short-term effect of opioid analgesic	54
Khomenko V.G. Renal tissue fibrinolysis against the ground of stress and xenobiotics	59
Dudenko V.G., Vdovychenko V.Yu., Kurinnoy V.V. Spatial topography of the diaphragm in the sagittal plane in women	61
Avdieyev Oleksandr, Dziubak Sergii Epidemiological analysis of dental diseases among individuals exposed to unfavourable psychoemotional surroundings	65
Andriets M. M., Andriets V.I. Psychological aspects of physical culture and sport	68
Malanchuk L.M., Kryvytska G.O. Renal tissue fibrinolysis against the ground of stress and xenobiotics	71
Bambuliak A.V., Galagdina A.A., Boychuk O.M. Diagnostics of the frontal sinus development with adjacent structures in the prenatal period of human ontogenesis	73
Kryvetskyi V.V., Narsiya V.I., Kryvetskyi I.V. Blood supply of the cervical region of the vertebral column during the fetal period and in newborns	76
Pavlovych L.B., Bilous I.I. The indicators of stimulation electroneuromyography in patients with diabetic polyneuropathy	80



Deutscher Wissenschaftsherold German Science Herald

Bibliographic information published by the Deutsche Nationalbibliothek
The Deutsche Nationalbibliothek lists this publication in the Deutsche Nationalbibliografie; detailed
bibliographic data are available on the Internet at <http://dnb.dnb.de>

№ 2/2017 – 25
Passed in press in Juli 2017



WirmachenDruck.de

Sie sparen, wir drucken!